



COMPTROLLER *of* MARYLAND

S E R V I N G T H E P E O P L E

Office of the Comptroller of Maryland

Agency Updates
May 2025

www.MarylandComptroller.gov

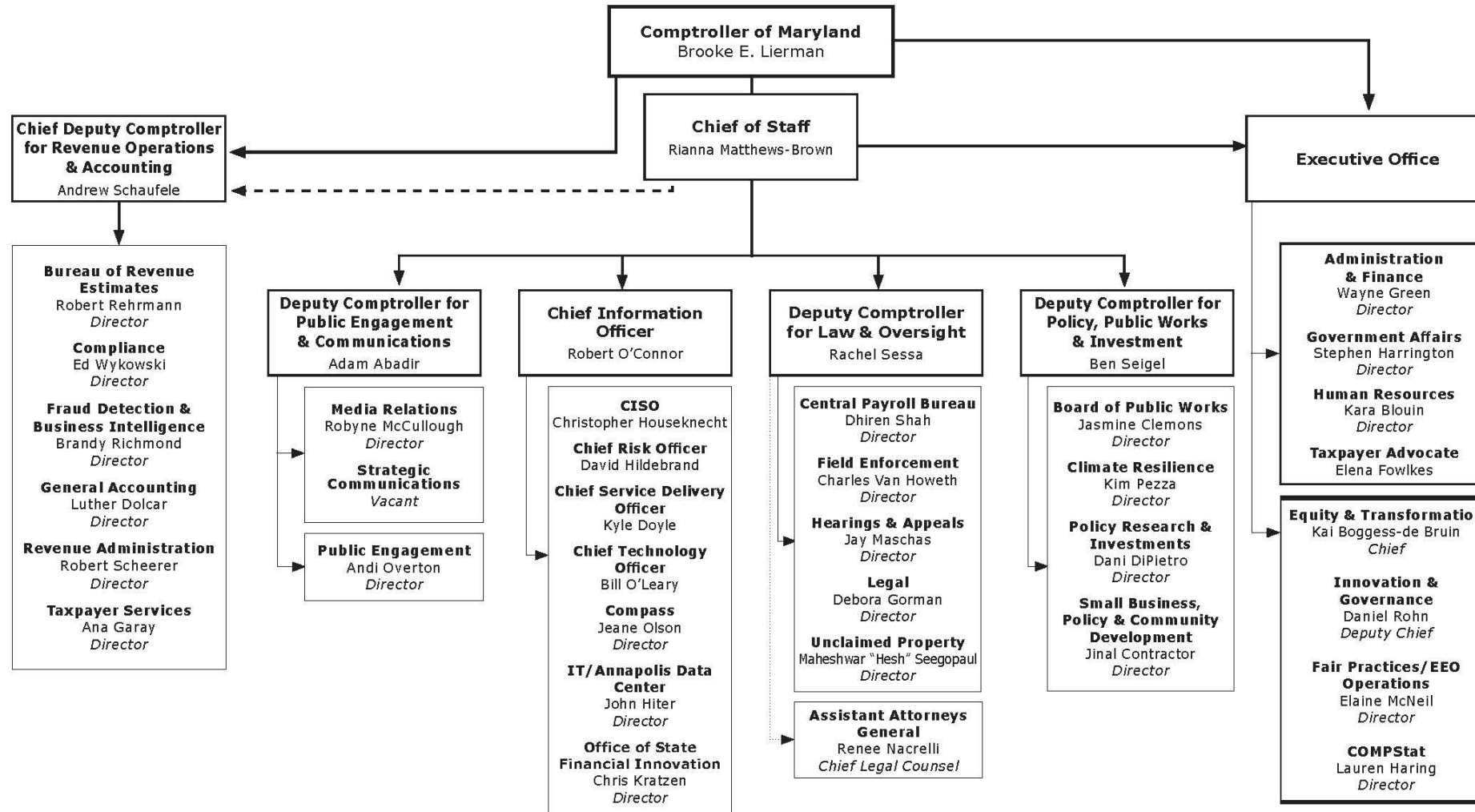
WHAT DOES THE COMPTROLLER OF MARYLAND DO?

- Elected Chief Financial Officer of the State
- The Comptroller brings an independent financial viewpoint to many state boards, including the Commission on Climate Change, the Maryland Commission on Public Art, the Maryland 529 Board, and more.
- State Revenue Administrator

New Leadership, New Vision
Team Comptroller



Team Comptroller Organization Chart



Vision & Priorities

To work in partnership to create a state that is more equitable, more resilient, and more prosperous so that every Marylander can reach their full potential.

Implement critical agency wide improvements to help our state government work better.

Reimagine how the agency's resources and expertise can make a positive impact on Maryland families, communities, and businesses

Ensure Maryland is well-positioned for responsible long term economic growth and success

Priority One

Make Government Work Better



Build Better Tools



- New website design launched April 2025:
www.MarylandComptroller.gov
 - Simple, Fast, and Mobile-Friendly!
- Maryland Tax Connect- moved away from SMART and onto a new more stable, system.
- *MyCOMConnect* CRM platform
- 70+ modernization projects

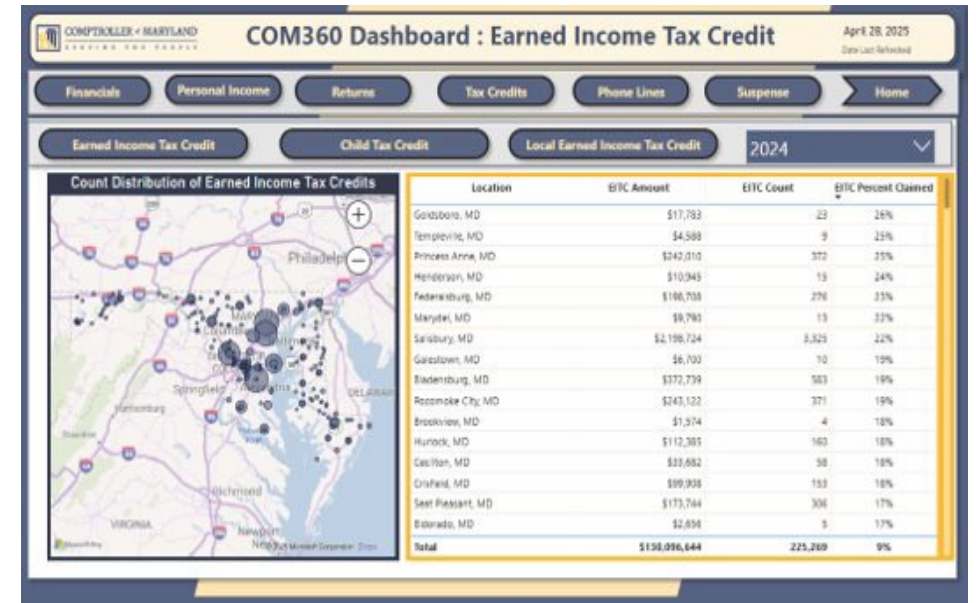
A screenshot of a terminal-style data entry form. The background is black with green text. At the top, it says 'USER ID JTA', 'MOTOR FUEL TAX BUREAU', 'PETROLEUM TRANSPORTER MAINTENANCE', and 'DATE 11/28/22'. Below this are several lines of input fields for 'FED NO', 'REPORT REQUIRED', 'EFF. DATE', 'RENEWAL DATE', '# VEHS', '# VESSELS', 'USDOT', 'STATUS', 'STATUS DATE', and '# RR CARS'. At the bottom, it says 'LAST UPDATE' and 'PLEASE USE RPE TO ADD'.

- TaxpayerAdvocate@marylandtaxes.gov



COMStat

- Leads our performance management and open data
- Three-person team
- Collecting, analyzing, interpreting, & reporting
- Designs & maintains Open Government Data (OGD)
 - Customer Service Data (analyzed across divisions)
 - Call times, emails received, resolution times
 - Tax Credits
 - Dollars claimed, regional data by county



Priority Two

Share the Resources of the Agency



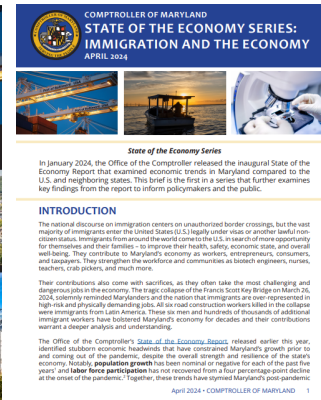
Share Data & Reporting to tell the Story of MD

State of the Economy Series



State of the Economy

January 2024



Immigration and the Economy

April 2024



Child Care and the Economy

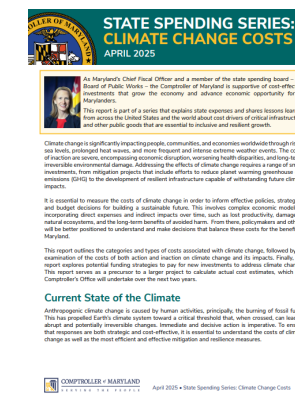
December 2024

State Spending Series



Transit Costs

March 2025



Climate Change Costs

April 2025

Procurement Economy



Procurement Playbook

June 2024

Research Reports: www.marylandcomptroller.gov/reports



MarylandComptroller.gov

SOTE Report: January 2024

- Coordinated effort between the Comptroller's Bureau of Revenue Estimates and Policy Division.
- Quantitative & Qualitative data analysis of government economic data and meetings with hundreds of businesses, economic, and community leaders across Maryland.
- Compares economic trends between Maryland and neighboring states pre, during, post-pandemic.
- Maryland's economy began slowing relative to its neighbors and the U.S. at the end of 2016
- Maryland has low unemployment rate, high median household income; but decreased labor force participation rate and increased domestic outmigration coming out of covid.



Office of Public Engagement: #EarnedIt

- New Office of Public Engagement
 - Regional Officers with specializations (i.e. Seniors, New Americans, Veterans)
- Launched January 2025: Earned Income Tax Credit (EITC) and Child Tax Credit (CTC) promotion campaign
- Largest anti-poverty program in state government
- Leaving money on the table:
 - In 2023, 181,000 eligible Marylanders did not claim the EITC (about 30% of all eligible Marylanders)
 - Certain counties have at least 35% eligible residents missing out on EITC: Kent, Carroll, Queen Anne's, & Garrett

A smiling female teacher with curly hair stands in a classroom, gesturing with her hands as she interacts with young students seated at their desks.

#EarnedIt

Keep more of your hard-earned money!

Learn more about the **Earned Income Tax Credit**. See if you qualify to claim this credit this tax season to **lower your tax payment or increase your refund!**

www.MarylandTaxes.gov/EarnedIt

 **COMPTROLLER of MARYLAND**
SERVING THE PEOPLE

A woman wearing a yellow safety vest over a dark shirt is working in a warehouse, focused on a laptop screen while handling boxes.

#EarnedIt

You #EarnedIt! You should keep it.


Learn more about the **Earned Income Tax Credit**. See if you qualify to claim this credit this tax season to **lower your tax payment or increase your refund!**

www.MarylandTaxes.gov/EarnedIt

 **COMPTROLLER of MARYLAND**
SERVING THE PEOPLE

The Port Act: COM Comes Through!

- Port Act passed by General Assembly in 2024, signed as emergency legislation by Gov. Moore. Funds for businesses & individuals. Applied through Department of Labor and Commerce

Worker Support Program by Week			
Program Name		Worker Support Program 	
Week Beginning	Count	Amount	
4/21/2024	3,423	\$	1,471,890.00
4/28/2024	1,544	\$	663,920.00
5/5/2024	1,641	\$	705,630.00
5/12/2024	4,590	\$	1,973,700.00
5/19/2024	4,909	\$	2,110,870.00
5/26/2024	4,209	\$	1,809,870.00
6/2/2024	4,308	\$	1,854,590.00
6/9/2024	1,103	\$	474,290.00
6/16/2024	4,069	\$	1,749,670.00
6/23/2024	2,013	\$	877,630.00
6/30/2024	4,511	\$	3,876,450.00
7/7/2024	1,132	\$	658,760.00
7/14/2024	400	\$	161,680.00
7/21/2024	222	\$	97,610.00
7/28/2024	150	\$	64,500.00
8/4/2024	56	\$	24,080.00
8/11/2024	40	\$	17,200.00
8/18/2024	46	\$	19,780.00
8/25/2024	46	\$	19,780.00
9/1/2024	3	\$	1,290.00
9/8/2024	2	\$	860.00
9/22/2024	5	\$	2,150.00
9/29/2024	11	\$	4,730.00
10/27/2024	2	\$	860.00
Grand Total	38,435	\$	18,641,790.00

Payments through COM:
\$55,706,911

Number of payments through
COM: 38,887



Priority Three
**Ensure Long Term Success
for Maryland**



Board of Public Works

BPW approves billions in State spending
(approximately \$200 million every other week)

- issuance of bonds
- acquiring and transferring State property

In 2024:

- MD awarded 93 new prime contracts to MBEs worth \$708 million - **193% increase** from 2023
- Achieved an average of 18.73% MBE subcontracting goal for new contracts - **3% increase** over the year before.

Coming Soon: BPW Dashboard

- See real-time updates on contract approvals



SRPS: Pension Fund Work

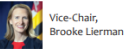
QUARTERLY PENSION POST FROM THE CHAIRS
MARYLAND STATE TREASURER || COMPTROLLER OF MARYLAND

Q4
2024

These quarterly reports highlight recent developments and achievements related to Maryland's pension system.



Chair,
Derek Davis



Vice-Chair,
Brooke Lierman

MANAGING CLIMATE RISK

BACKGROUND

In a [2020 report](#), the Federal Reserve Board of Governors identified climate change as a critical emerging risk to the stability of the U.S. financial system. Both the energy transition and physical impacts wrought by the changing climate present risks and opportunities for the Maryland State Retirement and Pension System's investment program. Extreme weather events, wildfires, and rising sea levels threaten physical infrastructure, agriculture, coastal real estate, and the companies insuring them, while the shift from fossil fuels to renewable energy reshapes the profitability profile for energy-related businesses.

Just as investors assess cybersecurity risks posed by new technologies, or liquidity risks associated with various investment strategies, it is essential to evaluate the multifaceted impacts of climate change, which influence global financial markets through physical disruptions, regulatory changes, and evolving energy demands. For pension funds like Maryland's, these changes represent risks with potentially profound financial implications that could affect the ability to achieve the long-term returns necessary to secure retiree benefits.

MARYLAND'S APPROACH TO MANAGING CLIMATE RISK

The Maryland State Retirement and Pension System (SRPS) is proactively incorporating climate considerations into its \$70 billion portfolio by:

- **Conducting an annual risk assessment report**, which includes an evaluation of the portfolio's exposure to climate-related risks and transition readiness.
- **Integrating climate factors into the asset allocation process**, and associated portfolio modeling and scenario analysis, to ensure alignment with long-term investment objectives.
- **Considering climate risk when selecting and monitoring investment managers** – through due diligence and oversight – to ensure they are factoring climate risks into the investment decision-making process.

To further demonstrate its commitment to address climate change risk, last quarter the SRPS Board of Trustees approved a charter for a **new Climate Advisory Panel**. This charter outlines member qualifications, responsibilities, meeting protocols, and fiduciary requirements. The establishment of the Panel follows [legislation](#) adopted in 2022 that requires SRPS to include climate change as an investment risk factor and authorizes the Board of Trustees to assemble a Panel of experts to support this initiative. The Panel will include at least three external experts in the analysis of climate change risk. Together, this Panel will help the SRPS develop objectives, strategies and policies for establishing a path to a long-term sustainable portfolio consistent with fiduciary duties and the goals and objectives of the System's investment program.

- Current plan assets total **\$71 billion**
- Climate Advisory Panel launched with first five experts
- Emerging Manager Program institutionalized in Investment Policy Manual
- Private Equity Workforce Principles to be voted on at May Investment Committee meeting
- Co-Chair of new national coalition of state financial officers



New Compliance Tools + New Partnerships

Goal: Closing Maryland's Tax Gap - Maryland is due more than **\$3 billion** per year in unpaid taxes due to the state.

Making Progress:

- Collected \$800M in audits in 2024
- New positions, new tracking
 - New technology
 - Building COM's first **high value audits team**
- Investing in innovation – initial pilot and now full RFP for tax collection software company
 - Preventing tax fraud
- Partnership with Commerce to start automating business tax credits



What does Trump mean for Maryland's economy?



What does the Federal Government mean to MD Economy?

Federal Jobs

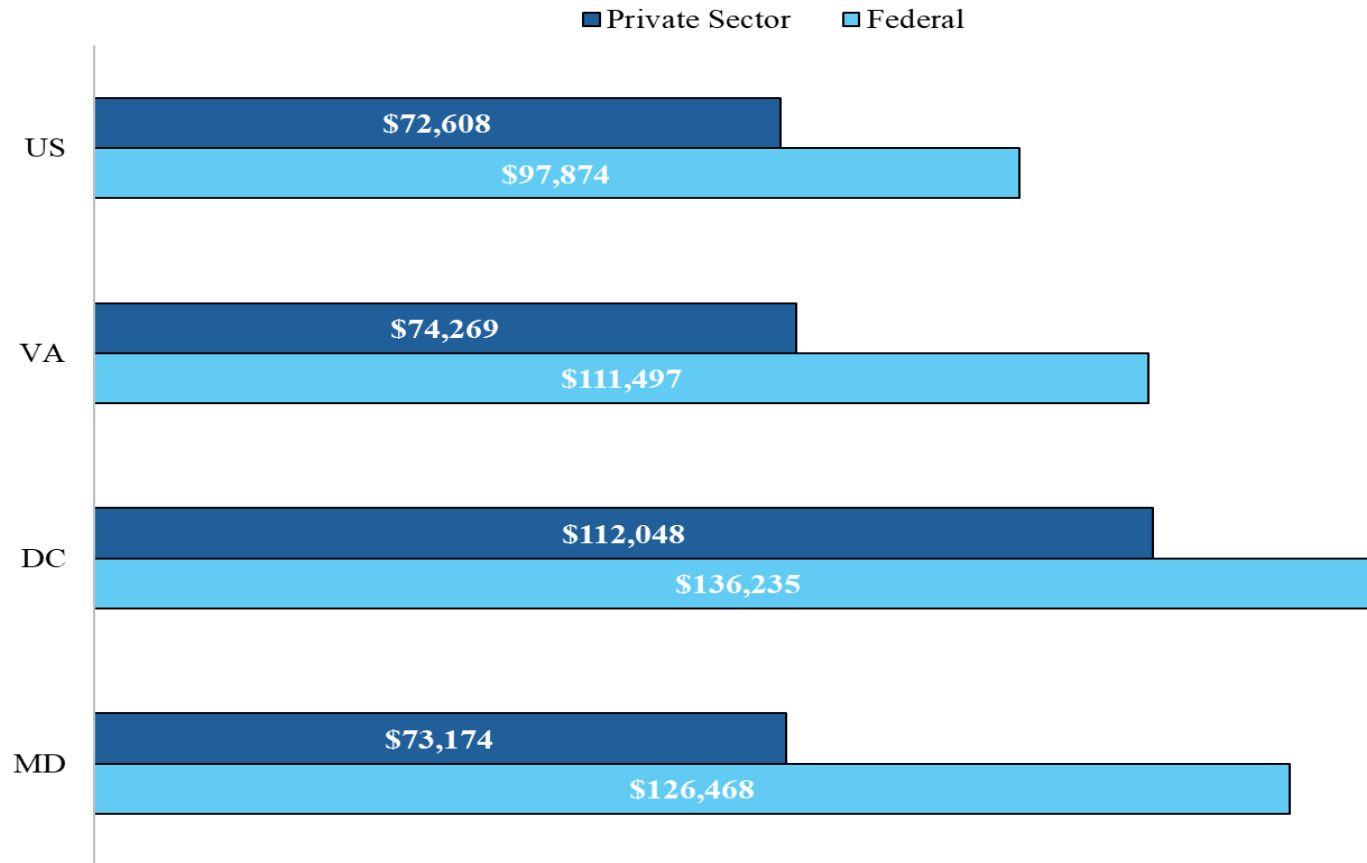
- **158,000** federal civilian jobs are located in Maryland.
- In tax year 2023, about **252,000** Maryland households reported a total of \$26.9 billion in federal wages.
- An additional **152,597** households drew retirement income; a total of **383,450** households drew W2 or retirement.

Federal Contracting

- Federal contracts represent about 10% of Maryland's GDP. Federal agencies awarded an estimated **\$46 billion** in contracts for work to be performed in Maryland in FY24.
- An estimated **3,300 Maryland-based firms** have active contracts with the federal government. The Department of Defense and Health and Human Services are responsible for 60% of federal contract awards in Maryland.

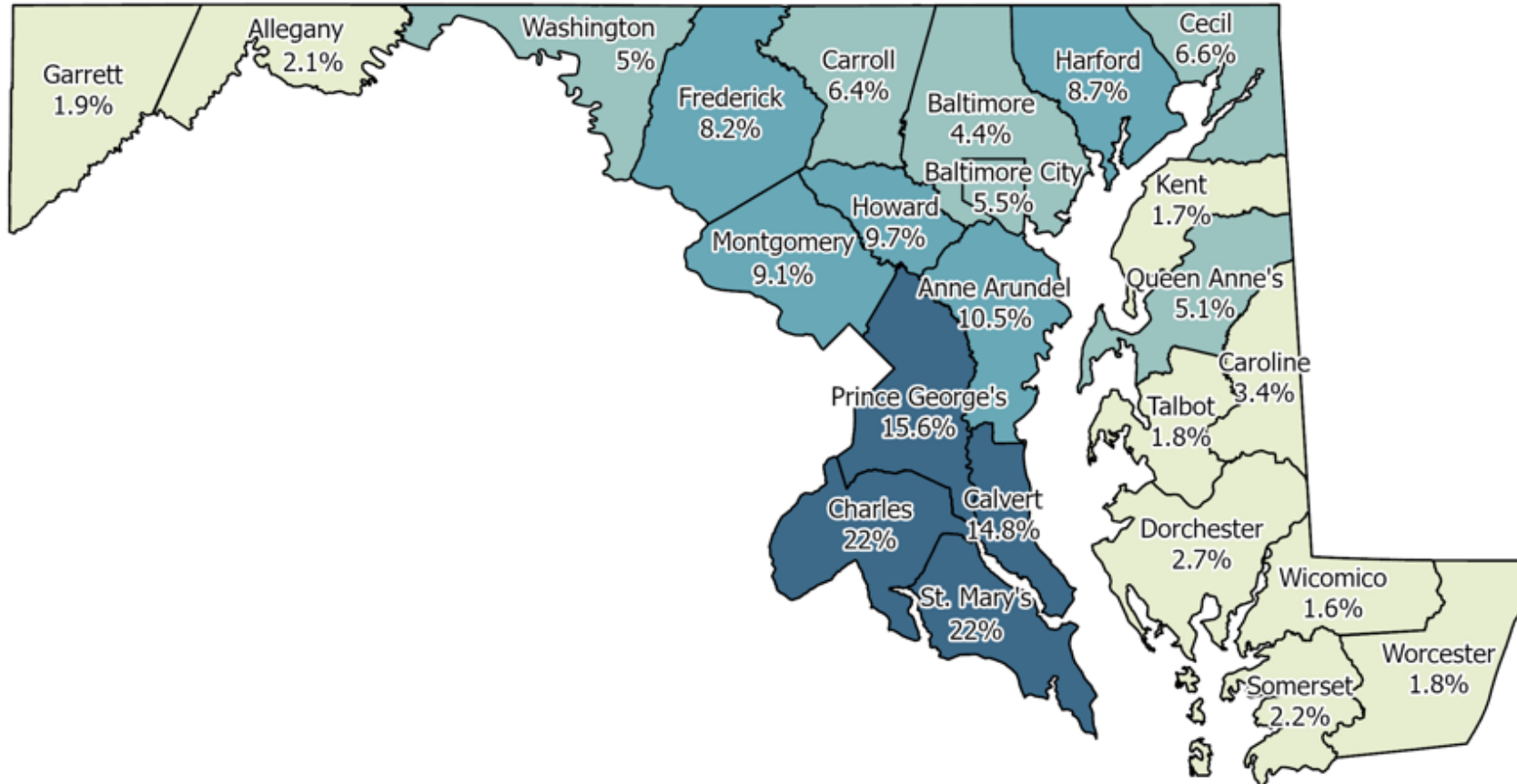
Average Federal Civilian and Private Sector Salary

Calendar 2023



Share of Gross Income from Federal Wages

Tax Year 2023



Source: Comptroller's Office

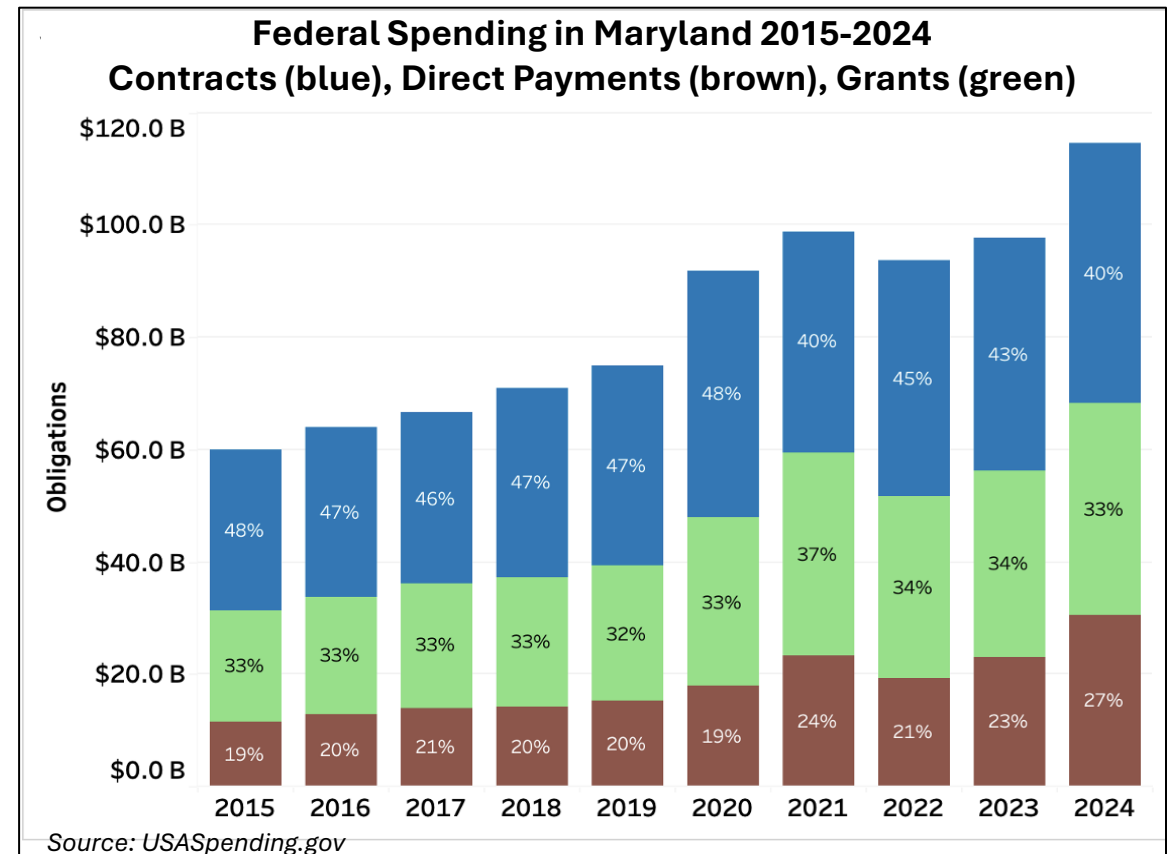
Impact of Federal Funds

Federal Funds

- Maryland received **\$114 billion** in federal contracts, and grants, direct spending in FY24
- Since 2015, federal spending has nearly doubled in Maryland
- Federal cuts will impact state agencies and organizations that support needs of Marylanders

State Agencies and Nonprofits

- In FY 2024, federal agencies awarded **\$31 billion in grants** to state and local governments and nonprofit organizations
- Federal grants represent about 20% of total state revenues
- Nonprofits, from universities and hospitals to community organizations, rely on federal funds



Trump Administration Cuts: Impacts on Maryland

- **Jobs**

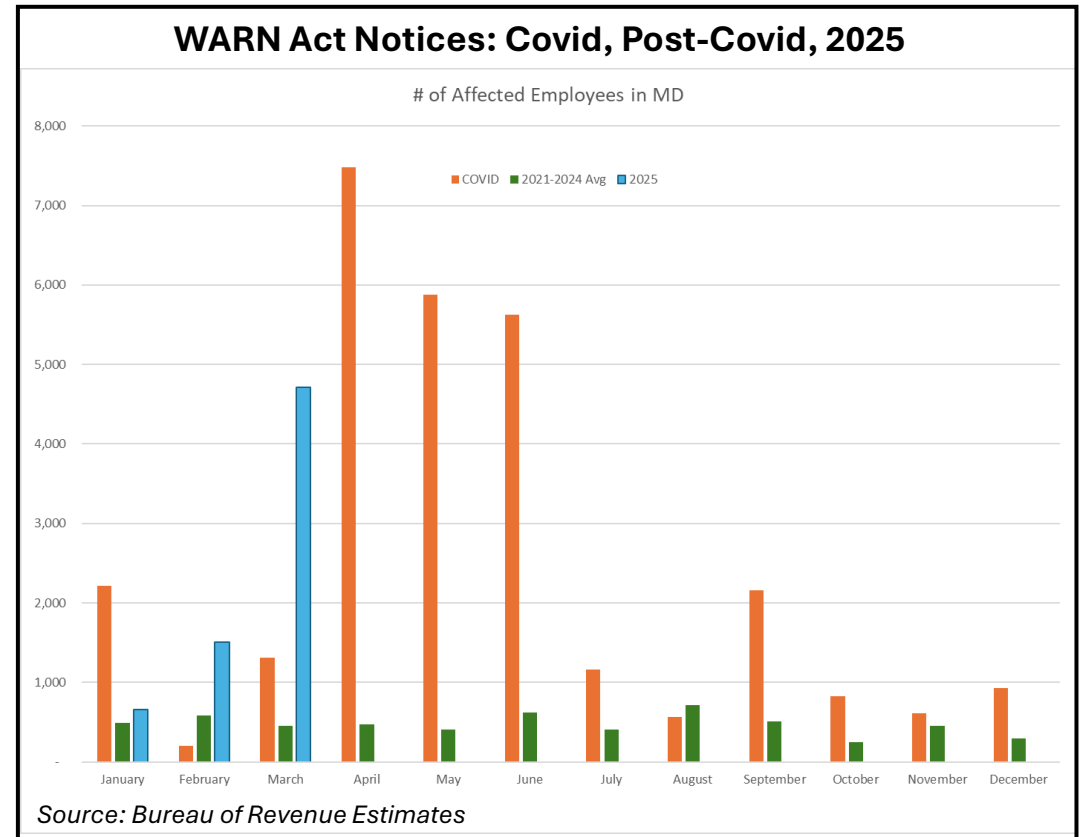
- 2,700 federal jobs lost in March (compared to 8,000 during 2-year period of Sequestration).
- Thousands more jobs already cut by federal contractors and grantees (e.g., JHU 2,200).

- **Population**

- MD's population growth is dependent on international migration; immigrants are 16% of pop, 21% of labor force.
- During first Trump admin, international migration decreased significantly.

- **State Revenues**

- BRE forecasts federal actions will reduce tax year 2025 state and local withholding collections by \$262 million.
- Withholding growth rate forecasted at 2.4% growth in March 2025, down from 4.1% growth in Sept 2024 estimates.



What's Next?

- Implementing new tax changes
 - IT Services tax
 - Enhanced standard deduction
 - Phase-out of itemized deductions for certain taxpayers

<https://www.marylandcomptroller.gov/individuals/2025-tax-updates.html>
- Strengthening customer service + Modernizing UCP, Payroll, and more!
 - COMStat
 - More resources in branch offices and call centers, including translation services
- Increasing Transparency
 - Public Dashboards
- Working with Moore-Miller Team & OAG
- Research reports on the horizon:
 - Federal Impact (UMD)
 - Housing
 - Women & the Economy





COMPTROLLER *of* MARYLAND

S E R V I N G T H E P E O P L E

Thank You!

www.MarylandComptroller.gov